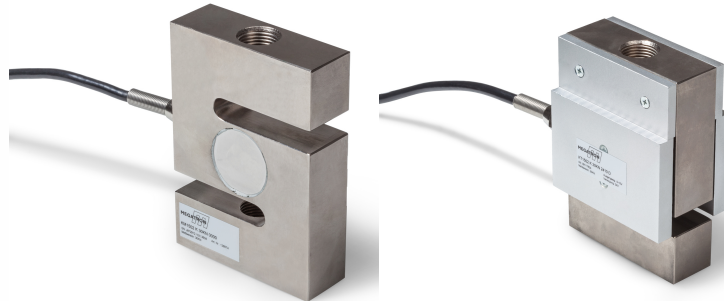
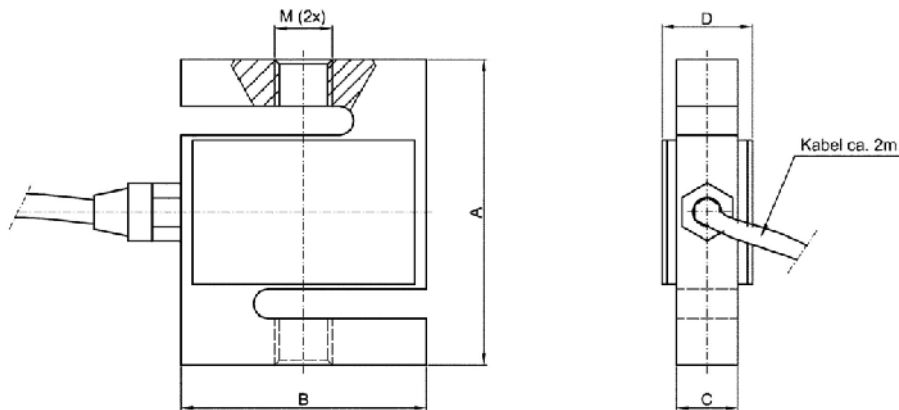


## Series KM1502 / KT1502

- Capacity from 0...5kN to 0...100kN
- Calibration either in tension or compression
- Optionally as loadcell only (KM1502) or with integrated amplifier (KT1502)
- Taring function (KT1502)
- RS232 (RS485 optional) (KT1502)
- Special functions (KT1502)



### Dimensional Drawing



Capacity	A	B	C	D (KM)	D (KT)	M
5kN; 10kN	76,5	50,8	25,5	29	35,4	M12 x 1,75
20kN; 30kN	108	76,3	25,5	25,5	35,4	M18 x 1,5
50kN	108	76,2	31,8	31,8	---	M24 x 2
100kN	178	127	50,8	50,8	---	M30 x 2

# Series KM1502 / KT1502

Technical Data	KM1502	KT1502
Capacity (0 to ...)	5; 10; 20; 30; 50; 100 kN	5; 10; 20; 30; 50 kN
Operating Overload	120 % F.S.	
Safe Overload	150 % F.S.	
Ultimate Overload	> 200% F.S.	
Rated Output	2 mV/V	-
Rated Output Tolerance	10 % F.S.	-
Zero Balance	1 % F.S.	1 % F.S.**
Non-Linearity	0,06 % F.S.	
Hysteresis	0,06 % F.S.	
Creep (30 min.)	0,06 % F.S.	
Total Error *	0,15 % F.S.	
Non-Repeatability	0,04 % F.S.	
Temp.Effect on Zero	0,05 % F.S./10K	
Temp.Effect on Output	0,05 % F.S./10K	
Legend:	* ) Hysteresis included ** ) Electronic version 2410: no signal change < 1% F.S. (for analog signal only, digital signal without limitation) All above values in %F.S. < = ± values Calibration protocol included	

Mechanical Data	
Measuring Method	Foil Strain Gage Full Bridge
Material Loadcell	Steel

Ambient Conditions	KM1502	KT1502
Compensated Temperature	-10 ... +40°C	0 ... +40°C
Operating Temperature	-20 ... +60°C	-20 ... +60°C
Storage Temperature	-20 ... +80°C	-20 ... +80°C
Protection Class	IP 65	IP 64

Electrical Data	KM1502	KT1502
Input Impedance	385 ± 15 Ω	-
Output Impedance	350 ± 3 Ω	-
Insulation	> 2000 MΩ	> 2000 MΩ
Recommended Excitation	10 VDC typ. / 15 VDC max.	24 VDC ± 20%
Cable Size	4-wire shielded, 2m	8-wire shielded, 2m

# Series KM1502 / KT1502

## Signal Versions

	Supply	Signal
0000 without amplifier	10 V	20 mV
2410 built in amplifier	24 V	0...10 V
2442 built in amplifier	24 V	4...20 mA

## Electrical Connection

Wiring	0000		2410 / 2442	
	black	Excitation -	white	Excitation -
	red	Excitation +	brown	Excitation +
	green	Signal +	green	Signal analog
	white	Signal -	yellow	Tx / A ( RS485)
	Shield	On request shield on housing	grey	Rx / B ( RS485)
			pink	GW 1
			blue	GW 2
			red	Tara
			Shield	On request shield on housing

## Ordering Code

Ordering Code					Accessories
<b>Series</b>	<b>KM1502</b>				<b>External Amplifier</b>
	<b>KT1502</b>				
<b>Capacity</b>		<b>5KN</b>			<ul style="list-style-type: none"> <li>• IMA2-DMS</li> </ul>
		<b>10KN</b>			
		<b>20KN</b>			
		<b>30KN</b>			
		<b>50KN</b>			
		<b>100KN (nur KM1502)</b>			
<b>Connection</b>			<b>K</b>		
<b>Amplifier</b>				<b>0000 (KM1502)</b>	
				<b>2410 (KT1502)</b>	
				<b>2442 (KT1502)*</b>	
<b>Force Direction</b>					<b>D (KT1502)</b>
					<b>Z (KT1502)*</b>

(\*) = on request available for projects

24.05.2016