

with flatribbon cable



with round signal cable

Key features

- Ø25 mm housing made of glass fibre reinforced thermoplastic
- Magnetic, gradient-based signal evaluation
- Digital signal processing
- Sealing IP67
- Operating temperature range -40 to 85°C
- Measurement range up to 360° singleturn, 72000° multiturn
- Electrical connection: 0.15 m flat ribbon cable, 1 m round cable, solder holes or clamping terminals
- Ex works programmable signal output functions (single turn), field-programmable signal output for teach-in version
- Mechanical stop and higher torque available for panel encoder applications

Applications

- Mechanical engineering
- Equipment manufacturing
- Speed measurement with low operational speeds (up to 100 rpm)
- Motor commutation
- Driverless transport systems
- Medical equipment
- Special vehicles
- High requirements on the lifetime
- Requirements of a user defined signal output function
- As panel encoder for manual input

Output variants

<p>Singleturn absolute encoders</p>	<ul style="list-style-type: none"> ▪ Analogue voltage or current loop output (12 bit resolution) ▪ Analogue PWM output (12 bit resolution) ▪ Digital output SPI (14 bit, also redundant) ▪ Absolute linearity up to 0.6%
<p>Field-Programmable single or multiturn absolute encoder</p>	<ul style="list-style-type: none"> ▪ Analogue voltage or current loop output (12 bit resolution), range of 10° to 72000° ▪ Not True-Power-On, max. 200 revolutions (72000°)
<p>Incremental encoders</p>	<ul style="list-style-type: none"> ▪ 1 to 1024 Impulses per revolution (ppr.) ▪ Outputs TTL, Push-Pull, Open Collector

General
Content
Overview
Voltage/Current (ETA25K)
Redundant Analogue (ETx25K)
PWM (ETP25K)
SEI/SPI/SSI (ETS25K)
Redundant Serial (ETS25K)
Incremental (ETI25K)
Multiturn ETx25KPM
Drawings
Technical data
Accessories

ETx25K encoders – compact and versatile

The ETx25 series rotary kit encoders are specially designed for applications where the customer wants to measure the rotation or angular position of externally mounted components. The non-contact rotary encoders in the Ø25 housing made of glass fibre reinforced thermoplastic can be precisely matched to the respective area of application thanks to their numerous electronic options. Whether as incremental or absolute encoders, they cover a wide range of applications and, depending on the output electronics, are used in systems, laboratory devices and medical devices, for example.

ETx25K encoders are among the most versatile encoders on the market. The customer places the supplied magnet on a component, and mounts the rotary encoder at a defined distance from the magnet. Thus the sensor records the angular position without a mechanical connection to the moving part. Signal processing is digital and based on the magnetic (Hall Effect) acquisition of measured values. The gradient-based evaluation ensures high interference immunity, e. g. against temperature fluctuations and EMC influences. This technology leaves the disadvantages of conventional Hall sensors far behind. ETx25 rotary encoders are designed for maximum service life. The number of defects or failures in rotary encoders of this technological design is very low, even after decades of use.

In addition to a large number of standard options, the modular system of the ETx25K rotary encoder enables optimal adaptation to the respective application. In addition, the concept also allows prompt customer-specific adjustments (even in small series) on the basis of a clearly structured price model. Typical modifications are, for example, customer-specific signal output functions, special cable lengths or individually assembled electrical connection cables.

General
Content
Overview
Voltage/Current (ETA25K)
Redundant Analogue (ETx25K)
PWM (ETP25K)
SER/SPI/SSI (ETS25K)
Redundant Serial (ETS25K)
Incremental (ETI25K)
Multiturn ETA25KPM
Drawings
Technical data
Accessories

Table of Contents

1. GENERAL INFORMATION AND INTRODUCTION	1
2. ELECTRONICS AND ORDER CODES	4
a. Absolute Single Turn Encoders	5
i. Analogue Current Loop or Voltage Output – ETA25K	5
ii. Redundant Analogue Voltage Output – ETA25KX	7
iii. Pulse Width Modulation (PWM) – ETP25K	9
iv. Serial output SPI – ETS25K	11
v. Redundant Serial Output SPI – ETS25KX	15
b. Incremental Encoders – ETI25K	17
c. Multi-/Singleturn Teach-In Encoders with Analogue Output – ETA25KPM	19
3. TECHNICAL DRAWINGS	22
4. MECHANICAL DATA, COMPLIANCE AND ENVIRONMENTAL SPECIFICATIONS	25
5. ORDER CODES – FULL OVERVIEW	26
6. ACCESSORIES	27

General
Content
Overview
Voltage/Current Redundant Analogue (ETA25K)
PWM (ETP25K)
SER/SPI/SSI Redundant Serial (ETS25K)
Incremental (ETI25K)
Multiturn ETA25KPM
Drawings
Technical data
Accessories

Series overview

>>Please refer to the following sections for details

		Singleturn					Teach-In Multi/Singleturn	
Series		ETI25K	ETS25K	ETS25KX	ETA25K	ETA25KX	ETP25K	ETA25KPM
Electronics redundant		NO	NO	YES	NO	YES	NO	NO
Output signal(s)		Incremental A, B, Z	Digital absolute SPI: 14 bit	Digital absolute SPI: 14 bit	Analogue absolute 0 to 5 V 0 to 10 V 4 to 20 mA	Analogue absolute 0 to 5 V 0 to 10 V	PWM absolute 5 V / 244 Hz / PWM 10-90%	Analogue absolute 0 to 5 V 0 to 10 V 4 to 20 mA
Effective electrical angle of rotation		360°			7° ≤ α ≤ 360° (programmable in factory)			0-10° to 0-72000° (programmable by user) factory programming 0 to 3600°
Resolution		-	SPI: 14 bit	SPI: 14 bit	12 bit			
Supply voltage(s)	Output type	Push-Pull, open collector	SPI	SPI	Analogue 0 to 5 V	Analogue 0 to 5 V	PWM	Analogue 0 to 5 V
	Supply voltage	24 V (10 to 30 V)	5 V ± 10%	5 V ± 10%	5 V ± 10% (ratiometric) or 24 V (9 to 30 V)	5 V ± 10%	5 V ± 10%	24 V (9 to 30 V)
	Output type	TTL			Analogue 0 to 10 V	Analogue 0 to 10 V		Analogue 0 to 10 V
	Supply voltage	5 V ± 10%			24 V (15 to 30 V)	24 V (15 to 30 V)		24 V (15 to 30 V)
	Output type				Current loop 4 to 20 mA			Current loop 4 to 20 mA
	Supply voltage				24 V (9 to 30 V)			24 V (11 to 30 V)
Programming options								
Programmable by customer		NO	NO	NO	NO	NO	NO	YES
Programmable ex works		YES	YES	YES	YES	YES	YES	YES
Electrical connection options								
Round cable		YES						
Flat ribbon cable		YES						

Series ETA25K

Key features ETA25K:

- Analogue outputs 0 to 5 V, 0 to 10 V, 4 to 20 mA
- Redundant versions available – see separate section
- Versatile connecting possibilities
- Several factory programming possibilities
- Supply voltages: 5 VDC ±10%, 15 to 30 VDC, 9 to 30 VDC



Electrical data

Effective electrical angle of rotation 1.)	7° ≤ α ≤ 360° (programmable in factory), ±0.5°		
Independent linearity (best straight line) 1.)	±0.3% @ 360°		
Absolute Linearity 1.)	±0.6% @ 360°		
Output signal	0 to 5 V ratiometric	0 to 10 V	4 to 20 mA
Resolution	12 Bit		
Update rate	200 µs		
Supply voltage	5 V ±10%	15 to 30 V	9 to 30 V
Power consumption (no load)	≤18 mA		
Output load	≥ 5 kOhm		≤ 500 Ohm
Insulation voltage 1.)	1000 VAC @ 50 Hz, 1 min		
Insulation resistance 1.)	2 MOhm @ 500 VDC, 1 min		
MTTF (EN29500-2005-1)	1173a	965a	379a

1.) According IEC 60393

Wire colour/pin assignment

Function:	Option F (flat ribbon cable)	Option R (round signal cable)
OUT	Strand 2	brown
VSUP	Strand 1 (red)	red
GND	Strand 3	black

For details output programming see page 23.

General

Content

Overview

Voltage/Current
Redundant
Analogue (ETA25K)

PWM
(ETP25K)

SER(SPI/SSI)
Redundant
Serial (ETS25K)

Incremental
(ETI25K)

Multiturn
ETA25KPM

Drawings

Technical data

Accessories

Order Code ETA25K – singleturn, analogue output, not redundant				
Description	Selection: standard= black/bold , possible options= <i>grey/italic</i>			
Series	ETA25K			
Supply voltage / output signal: VSUP=5 V (4.5 to 5.5 V) / OUT=0 to 5 V (<i>ratiometric</i>) VSUP=24 V (15 to 30 V) / OUT=0 to 10 V VSUP=24 V (9 to 30 V) / OUT=4 to 20 mA VSUP=24 V (9 to 30 V) / OUT=0 to 5 V	0505 2410 2442 <i>2405</i>			
Sense of rotation: (when looking at the encoder's front surface) Clockwise <i>Counterclockwise</i>			CW <i>CCW</i>	
Rotation angle* in [°]: 360 <i>320</i> <i>270</i> <i>180</i> <i>90</i> <i>Custom rotation angle (≥7°, positive integer)</i>			360 <i>320</i> <i>270</i> <i>180</i> <i>90</i> <i>XXX</i>	
Electrical connection, cable length: Flat ribbon cable, standard length 0.15 m <i>Flat ribbon cable with custom length [x.xx m]</i> Round cable, standard length 1 m <i>Round cable with custom length [x.xx m]</i>				F0,15 <i>FX,XX</i> R1,00 <i>RX,XX</i>

* For details see page 23.

Order example ETA25K
Requirements:

VSUP=5 V / OUT=0 to 5 V, sense of rotation CW, rotation angle 360°, round cable 1.00 m

Example for order code:

ETA25K 0505 CW360 R1,00

Series ETA25KX – singleturn, analogue output, redundant

Key features ETA25KX :

- Independent signal processing. The ETA25KX rotary encoder electronics are based mainly on one Hall IC in which two semiconductor dies independently capture, evaluate and output the measured values
- Supply voltage, signal output and ground are galvanically insulated => separate electrical connections
- Supply voltages: 2 x 5 VDC or 2 x 15 to 30 VDC
- Signal outputs: 2 x 0 to 5 V or 2 x 0 to 10 V

Electrical data ETA25KX – singleturn, analogue output, redundant

Effective electrical angle of rotation 1.)	7° ≤ α ≤ 360° (programmable at factory), ±0.5°	
Independent linearity (best straight line) 1.)	±0.3% @ 360°	
Absolute Linearity 1.)	±0.6% @ 360°	
Output signal	0 to 5 V ratiometric	0 to 10 V
Resolution	12 Bit	
Update rate	200 μs	
Supply voltage	5 V ±10%	15 to 30 V
Power consumption (no load)	≤ 23 mA	
Output load	≥ 5 kOhm	
Insulation voltage 1.)	1000 VAC @ 50 Hz, 1 min	
Insulation resistance 1.)	2 MOhm @ 500 VDC, 1 min	
MTTF (EN29500-2005-1)	613a	202a

1.) According IEC 60393

Cable and pin assignment ETA25KX – singleturn, analogue output, redundant

Function:	Option F (flat ribbon cable)	Option R (round signal cable)
VSUP 1	Lead 1 (red)	red
OUT 1	Lead 2	brown
GND 1	Lead 3	black
GND 2	Lead 4	green
OUT 2	Lead 5	yellow
VSUP 2	Lead 6	orange

For details on output programming see page 23.

Order Code ETA25KX – redundant, singleturn, analogue output					
Description	Selection: standard= black/bold , possible options= <i>grey/italic</i>				
Series	ETA25KX				
Supply voltage / output signal: VSUP=5 V (4.5 to 5.5 V) / OUT=0 to 5 V (ratiometric) VSUP=24 V (15 to 30 V) / OUT=0 to 10 V		0505 2410			
Sense of rotation: (when looking at the encoder's front surface) Clockwise/Clockwise (ganging) <i>Clockwise/Counterclockwise (counterrotational)</i>			CW CW <i>CW CCW</i>		
Rotation angle* in [°]: 360 320 270 180 90 <i>Custom rotation angle (≥7°, positive integer)</i>				360 320 270 180 90 XXX	
Electrical connection, cable length: Flat ribbon cable, standard length 0.15 m <i>Flat ribbon cable with custom length [x.xx m]</i> Round cable, standard length 1 m <i>Round cable with custom length [x.xx m]</i>					F0,15 <i>FX,XX</i> R1,00 <i>RX,XX</i>

* For details see page 23.

Order example ETA25KX – redundant, singleturn, analogue output	
Requirement: Redundant, VSUP=5 V /OUT=0...5 V, signal 1 sense of rotation CW, signal 2 sense of rotation CW, electrical rotation 360° signal 1 and 2, flat ribbon cable 0.15 m	
Example for order code: ETA25KX 0505 CW CW 360 F0,15	

General
Content
Overview
Voltage/Current Redundant Analogue (ETA25K)
PWM (ETP25K)
SER/SPI/SSI Serial (ETS25K)
Redundant Serial
Incremental (ETI25K)
Multiturn ETA25KPM
Drawings
Technical data
Accessories

Series ETP25K – singleturn, PWM output, not redundant

Key features ETP25K:

- PWM signal output
- Frequency 244 Hz (constant)
- Pulse width (duty cycle) 10% (0°) to 90% (360°)
- Supply voltage: 5 VDC +/-10%



Electrical data ETP25K – singleturn, PWM output, not redundant

Effective electrical angle of rotation 1.)	$7^\circ \leq \alpha \leq 360^\circ$ (programmable in factory), $\pm 0.5^\circ$
Independent linearity (best straight line) 1.)	$\pm 0.4\%$ @ 360°
Absolute Linearity 1.)	$\pm 0.6\%$ @ 360°
Output signal	PWM (pulse width modulation)
Output signal voltage	5 V
Carrier frequency	244 Hz (constant)
Minimum duty cycle	10%, equal to app. 0.4 ms
Maximum duty cycle	90%, equal to app. 3.5 ms
Resolution	12 Bit
Supply voltage	5 V $\pm 10\%$
Power consumption (no load)	≤ 10 mA
Output load	≥ 5 kOhm
Insulation voltage 1.)	1000 VAC @ 50 Hz, 1 min
Insulation resistance 1.)	2 MOhm @ 500 VDC, 1 min
MTTF (EN29500-2005-1)	1267a

1.) According IEC 60393

Function description PWM signal output ETP25K

The ETP25K provides a constant carrier frequency with 244 Hz at the signal output, with HIGH and LOW signal levels which have a constant signal amplitude. A constant carrier frequency means a constant length of the period duration. The duty cycle and thus the pulse width changes in dependency of the rotating angle between 10% to 90% relative to the signal period. If the CW option is selected, the duty cycle increases clockwise when turning the shaft clockwise. If the CCW option is selected, the duty cycle decreases clockwise if the shaft is turned clockwise. Normally no signal conversion is required for further processing of the output signal, because many μ Controllers already have an input for PWM signals.

Cable and pin assignment

Function	Option F (flat ribbon cable)	Option R (round cable)
OUT	Lead 2	brown
VSUP	Lead 1 (red)	red
GND	Lead 3	black

For details on output programming see page 23.

Order Code ETP25K – singleturn, PWM output, not redundant					
Description	Selection: standard= black/bold , possible options= <i>grey/italic</i>				
Series	ETP25K				
Supply voltage / output signal: VSUP=5 V (4.5...5.5 V) / OUT=5 V / 244 Hz / PWM 10-90%	5PWM				
Sense of rotation: (when looking at the encoder's front surface) Clockwise <i>Counterclockwise</i>			CW <i>CCW</i>		
Rotation angle* in [°]: 360 <i>320</i> <i>270</i> <i>180</i> <i>90</i> <i>Custom rotation angle (≥7°, positive integer)</i>				<i>360</i> <i>320</i> <i>270</i> <i>180</i> <i>90</i> <i>XXX</i>	
Electrical connection, cable length: Flat ribbon cable, standard length 0.15 m <i>Flat ribbon cable with custom length [x.xx m]</i> Round cable, standard length 1 m <i>Round cable with custom length [x.xx m]</i>					F0,15 <i>FX,XX</i> R1,00 <i>RX,XX</i>

* For details see page 23.

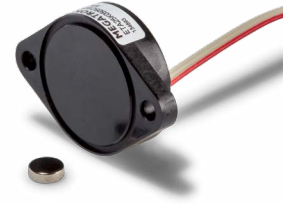
Order example ETP25K – singleturn, PWM output, not redundant	
Requirement: VSUP=5 V / OUT=244 Hz, sense of rotation CW, rotation angle 360°, round cable 1 m	
Example for order code: ETP25K 5PWM CW 360 R1,00	

General
Content
Overview
Redundant Voltage/Current (ETA25K) Analogue (ETA25K)
PWM (ETP25K)
Redundant SER(SPI/SSI) Serial (ETS25K)
Incremental (ETI25K)
Multiturn ETA25KPM
Drawings
Technical data
Accessories

Series ETS25K – singleturn, digital output, not redundant

Key features ETS25K:

- Supply voltage 5 VDC +/-10%
- High-speed efficient signal transmission (only possible via short signal cables limited by clock rate)



Electrical data ETS25K – singleturn, digital output, not redundant

Output signal	SPI
Effective electrical angle of rotation 1.)	360°
Independent linearity (best straight line) 1.)	±0,3% @ 360°
Absolute linearity 1.)	±0,6% @ 360°
Resolution	14 Bit
Update rate	200 µs
Supply voltage	5 VDC ±10%
Power consumption (no load)	≤ 12 mA
Insulation voltage 1.)	1000 VAC @ 50 Hz, 1 min
Insulation resistance 1.)	2 MOhm @ 500 VDC, 1 min
MTTF (EN29500-2005-1)	2046a

1.) According IEC 60393

Order code ETS25K – singleturn, digital output, not redundant

Description	Selection: standard= black/bold , possible options= <i>grey/italic</i>		
Series	ETS25K		
Supply voltage / output signal: 5 VDC ± 10% / SPI (14 Bit)		05SPI	
Electrical connection, cable length: Flat ribbon cable, standard length 0.15 m <i>Flat ribbon cable with custom length [x.xx m]</i> <i>Round cable, standard length 1 m</i> <i>Round cable with custom length [x.XX m] (max. 1 m for SPI, recommended < 15 cm)</i>			F0,15 <i>FX,XX</i> <i>R1,00</i> <i>RX,XX</i>

Order example ETS25K – singleturn, digital output, not redundant

Requirement:

14 Bit/5 VDC/SPI, flat ribbon cable 0.15 m

Example for order code:

ETS25K 05SPI F0,15

Please pay attention to the limiting factors in the cable lengths / transmission limits of the serial communication.

Cable/colour assignment for option 05SPI, not redundant

Function:	Option R (round signal cable)	Option F (flatribbon cable)
VSUP	red	Lead 1
GND	black	Lead 2
CS, MOSI	yellow	Lead 3
CLK	green	Lead 4
DATA	orange	Lead 5
-	brown n/c	

Protocol description ETS25 – Serial Peripheral Interface (SPI)

Introduction

The encoder is configured as a Slave node. The serial protocol of the is a three wires protocol (/SS, SCLK, MOSI-MISO):

- /SS output is a 5 V tolerant digital input
- SCLK output is a 5 V tolerant digital input
- MOSI-MISO output is a 5 V tolerant open drain digital input/output

Basic knowledge of the standard SPI specification is required for the good understanding of the present section.

Even clock changes are used to sample the data. The positive going edge shifts a bit to the Slave's output stage and the negative going edge samples the bit at the Master's input stage.

MOSI (Master Out Slave In)

The Master sends a command to the Slave to get the angle information.

MISO (Master In Slave Out)

The MISO of the slave is an open-collector stage. Due to the capacitive load, a >1 kΩ pull-up is used for the recessive high level (in fast mode). Note that MOSI and MISO use the same physical wire of the ETS25.

/SS (Slave Select)

The /SS output enables a frame transfer. It allows a re-synchronization between Slave and Master in case of a communication error.

Master Start-Up

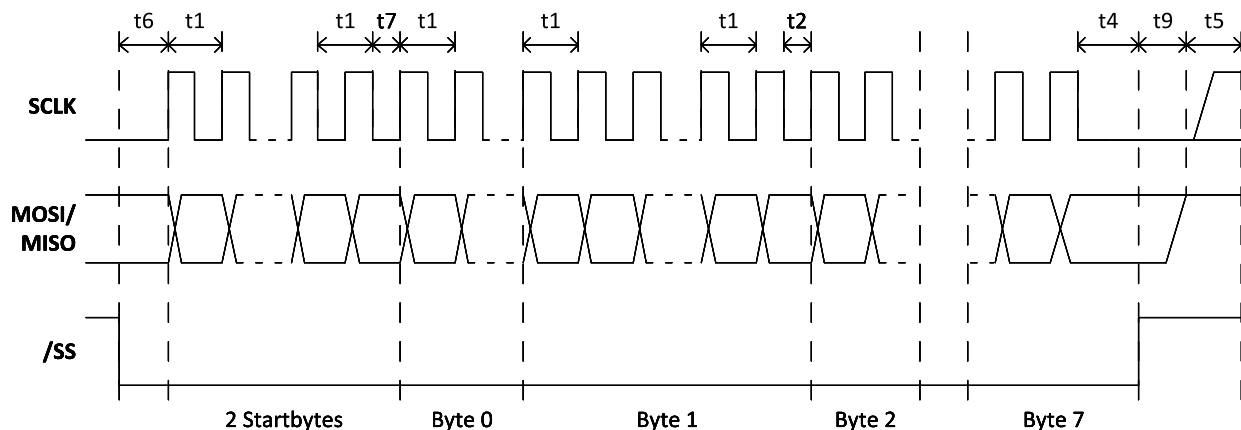
/SS, SCLK, MISO can be undefined during the Master start-up as long as the Slave is re-synchronized before the first frame transfer.

Slave Start-Up

The slave start-up (after power-up or an internal failure) takes 16 ms. Within this time /SS and SCLK is ignored by the Slave. The first frame can therefore be sent after 16 ms. MISO is Hi-Z (i.e. Hi-Impedance) until the Slave is selected by its /SS input. The encoder will cope with any signal from the Master while starting up.

Timing

To synchronize communication, the Master deactivates /SS high for at least t5 (1.5 ms). In this case, the Slave will be ready to receive a new frame. The Master can re-synchronize at any time, even in the middle of a byte transfer. Note: Any time shorter than t5 leads to an undefined frame state, because the Slave may or may not have seen /SS inactive.



General
 Content
 Overview
 Voltage/Current (ETA25K)
 Redundant Analogue (ETA25K)
 PWM (ETP25K)
 SER/SPI/SSI (ETS25K)
 Redundant Serial (ETS25K)
 Incremental (ETI25K)
 Multiturn ETA25KPM
 Drawings
 Technical data
 Accessories

Protocol description ETS25 – Serial Peripheral Interface (SPI) (continuation)
Description Timings

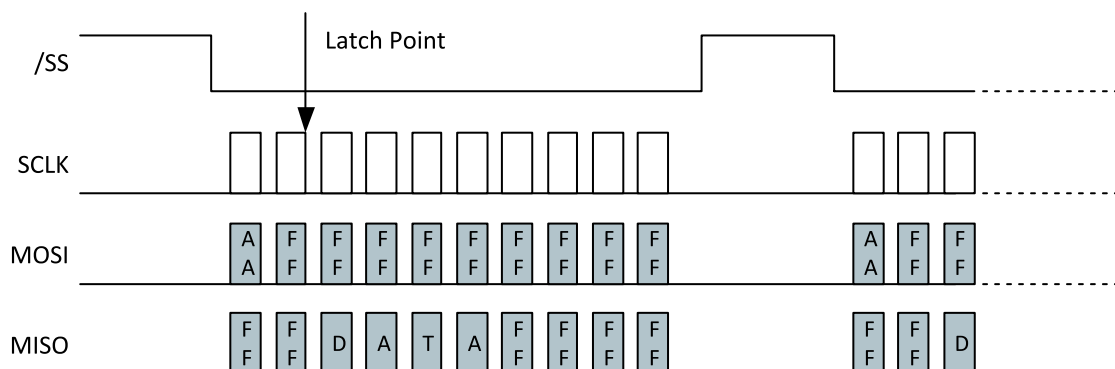
Timings	Min	Max	Remarks
t1	2.3 μ s / 6.9 μ s	-	No capacitive load on MISO. t1 is the minimum clock period for any bits within a byte.
t2	12.5 μ s / 37.5 μ s	-	t2 the minimum time between any other byte
t4	2.3 μ s / 6.9 μ s	-	Time between last clock and /SS=high=chip de-selection
t5	300 μ s / 1500 μ s	-	Minimum /SS = Hi time where it's guaranteed that a frame re-synchronizations will be started
t5	0 μ s	-	Maximum /SS = Hi time where it's guaranteed that NO frame re-synchronizations will be started.
t6	2.3 μ s / 6.9 μ s	-	The time t6 defines the minimum time between /SS = Lo and the first clock edge
t7	15 μ s / 45 μ s	-	t7 is the minimum time between the StartByte and the Byte0
t9	-	< 1 μ s	Maximum time between /SS = Hi and MISO Bus HighImpedance
T _{Startup}	-	< 10 ms / 16 ms	Minimum time between reset-inactive and any master signal change

Slave Reset

On internal soft failures the Slave resets after 1 second or after an (error) frame is sent. On internal hard failures the Slave resets itself. In that case, the Serial Protocol will not come up. The serial protocol link is enabled only after the completion of the first synchronization (the Master deactivates /SS for at least t5).

Frame Layer
Command Device Mechanism

Before each transmission of a data frame, the Master should send a byte AAh to enable a frame transfer. The latch point for the angle measurement is at the last clock before the first data frame byte.


Data Frame Structure

A data frame consists of 10 bytes:

- 2 start bytes (AAh followed by FFh)
- 2 data bytes (DATA16 – most significant byte first)
- 2 inverted data bytes (/DATA16 - most significant byte first)
- 4 all-Hi bytes

The Master should send AAh (55h in case of inverting transistor) followed by 9 bytes FFh. The Slave will answer with two bytes FFh followed by 4 data bytes and 4 bytes FFh.

Protocol description ETS25 – Serial Peripheral Interface (SPI) (Fortsetzung)
Timing

There are no timing limits for frames: a frame transmission could be initiated at any time. There is no interframe time defined.

Data Structure

The DATA16 could be a valid angle or an error condition. The two meanings are distinguished by the LSB.

DATA16: Angle A[13:0] with (Angle Span)/2¹⁴

Most Significant Byte							Least Significant Byte								
MSB						LSB	MSB								LSB
A13	A12	A11	A10	A9	A8	A7	A6	A5	A4	A3	A2	A1	A0	0	1

DATA16: Error

Most Significant Byte							Least Significant Byte								
MSB						LSB	MSB								LSB
E15	E14	E13	E12	E11	E10	E9	E8	E7	E6	E5	E4	E3	E2	E1	E0

DATA16: Error

BIT	Name	Description
E0	0	
E1	1	
E2	F_ADCMONITOR	ADC Failure
E3	F_ADCSATURA	ADC Saturation (Electrical failure or field too strong)
E4	F_RGTOOLOW	Analog Gain Below Trimmed Threshold (Likely reason: field too weak)
E5	F_MAGTOOLOW	Magnetic Field Too Weak
E6	F_MAGTOOHIGH	Magnetic Field Too Strong
E7	F_RGTOOHIGH	Analog Gain Above Trimmed Threshold (Likely reason: field too strong)
E8	F_FGCLAMP	Never occurring in serial protocol
E9	F_ROCLAMP	Analog Chain Rough Offset Compensation: Clipping
E10	F_MT7V	Device Supply VDD Greater than 7V
E11	-	
E12	-	
E13	-	
E14	F_DACMONITOR	Never occurring in serial protocol
E15	-	

Angle Calculation

All communication timing is independent (asynchronous) of the angle data processing. The angle is calculated continuously by the Slave every 350 µs at most. The last angle calculated is hold to be read by the Master at any time. Only valid angles are transferred by the Slave, because any internal failure of the Slave will lead to a soft reset.

Error Handling

In case of any errors listed above, the Serial protocol will be initialized and the error condition can be read by the master. The slave will perform a soft reset once the error frame is sent. In case of any other errors (ROM CRC error, EEPROM CRC error, RAM check error, intelligent watchdog error...) the Slave's serial protocol is not initialized. The MOSI/MISO output will stay Hi-impedant (no error frames are sent).

Series ETS25KX – singleturn, SPI output, redundant

Key features ETS25KX:

- Independent signal processing. The ETS25KX rotary encoder electronics are based on one Hall IC in which two semiconductor elements independently capture, evaluate and output measured values
- Supply voltage, signal output and ground are galvanically insulated => separate electrical connections
- Supply voltage: 2 x 5 VDC ±10%
- Signal output: 2 x SPI

Electrical data ETS25KX – singleturn, SPI output, redundant

Effective electrical angle of rotation 1.)	360°
Sense of rotation (when looking at the shaft, from the front)	Clockwise/clockwise (ganging)
Independent linearity (best straight line) 1.)	±0.4% @ 360°
Absolute linearity 1.)	±0.8% @ 360°
Output signal	SPI
Resolution	14 Bit
Update rate	200 µs
Supply voltage	5 VDC ±10%
Power consumption (no load)	≤ 24 mA
Insulation voltage 1.)	1000 VAC @ 50 Hz, 1 min
Insulation resistance 1.)	2 MOhm @ 500 VDC, 1 min
MTTF (EN29500-2005-1)	2046a

1.) According IEC 60393

Cable and pin assignment ETS25KX

Function:	Option F (flat ribbon cable)	Explanation:
VSUP 1	Lead 1 (red)	5 pol. flat ribbon cable no. 1
GND 1	Lead 2	5 pol. flat ribbon cable no. 1
Data 1	Lead 3	5 pol. flat ribbon cable no. 1
Clock 1	Lead 4	5 pol. flat ribbon cable no. 1
Chipselect 1	Lead 5	5 pol. flat ribbon cable no. 1
VSUP 2	Lead 1 (red)	5 pol. flat ribbon cable no. 2
GND 2	Lead 2	5 pol. flat ribbon cable no. 2
Data 2	Lead 3	5 pol. flat ribbon cable no. 2
Clock 2	Lead 4	5 pol. flat ribbon cable no. 2
Chipselect 2	Lead 5	5 pol. flat ribbon cable no. 2

Please refer to the drawings section for details on output programming.

Order Code ETS25KX – redundant, singleturn, digital output

Description	Selection: standard= black/bold , possible options= <i>grey/italic</i>		
Series	ETS25KX		
Supply voltage / output signal: 5 VDC ± 10% / SPI (14 Bit), redundant		05SPI	
Electrical connection, cable length: Flat ribbon cable, standard length 0.15 m, (two arranged above each other) <i>Flat ribbon cable with custom length [x.xx m], (two arranged above each other)</i> <i>Round cable with custom length [x.xx m]</i>			F0,15 <i>FX,XX</i> <i>RX,XX</i>

Please pay attention to the limiting factors in the cable lengths / transmission limits of the serial communication.

Order example ETS25KX

Specifications:

14 Bit/5 VDC/SPI, two 5 pol. flat ribbon cables arranged one above the other with cable length 0.15 m for each flat ribbon cable

Example for order code:

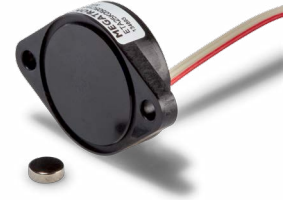
ETS25KX 05SPI F0,15

General
Content
Overview
Redundant
Voltage/Current
Analogue (ETA25K)
PWM (ETP25K)
SER/SPI/SSI
Serial (ETS25K)
Incremental (ETI25K)
Multiturn (ETA25KPM)
Drawings
Technical data
Accessories

Series ETI25K – singleturn, incremental output, not redundant

Key features ETI25K:

- Channels: A, B and index signal Z
- TTL, Push Pull or Open Collector electronics
- Maximum number of pulses per channel 1024 pulses per revolution (4096 steps)
- Option: ex works programmable number of pulses from 1 to 128 ppr in one pulse step-width, as well as 256, 512, 1024 ppr

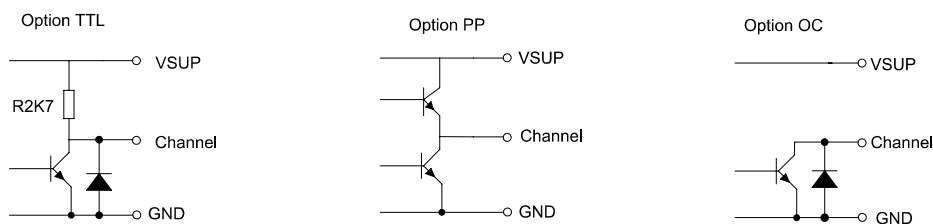


Electrical data ETI25K – singleturn, incremental output, not redundant

Output Signal	TTL	Push-Pull	Open Collector
Number of pulses	1 to 128 ppr, 256, 512, 1024 ppr		1 to 128 ppr, 256 ppr.
Limit frequency	100 kHz		10 kHz
Switch-on delay	20 ms		
Supply voltage	5 VDC \pm 10%	10 to 30 V	10 to 30 V
Power consumption (no load)	\leq 15 mA	\leq 50 mA	\leq 25 mA
Output load	\geq 5 kOhm		
Max. pull-up voltage	-		30 VDC
Insulation voltage 1.)	1000 VAC @ 50 Hz, 1 min		
Insulation resistance 1.)	2 MOhm @ 500 VDC, 1 min		
MTTF (EN29500-2005-1)	473a	462a	570a

1.) According to IEC 60393

Output circuit ETI25K per channel



For details on output programming see page 23.

Order Code ETI25K – singleturn, incremental output

Description	Selection: standard= black/bold , possible options= <i>grey/italic</i>		
Series	ETI25K		
Number of pulses (ppr):			
32		32	
64		64	
128		128	
256		256	
512 <i>(only for TTL and push-pull)</i>		512	
1024 <i>(only for TTL and push-pull)</i>		1024	
<i>User-defined number of pulses 1 to 128, increment 1 pulse</i>		<i>0XXX</i>	
Supply voltage / output signal:			
VSUP=24 V (10 to 30 V) / OUT=push-pull A, B, Z		24BZPP	
VSUP=5 V ± 10% / OUT=TTL A, B, Z		05BZTTL	
VSUP=24 V (10 to 30 V) / OUT=open collector A, B, Z		24BZOC	
Electrical connection, cable length:			
Flat ribbon cable, standard length 0.15 m <i>(not for UVW)</i>			F0,15
<i>Flat ribbon cable with custom length [x.xx m] (not for UVW)</i>			<i>FX,XX</i>
Round cable, standard length 1 m			R1,00
<i>Round cable with custom length [x.xx m]</i>			<i>RX,XX</i>

Order example ETI25K – singleturn, incremental output

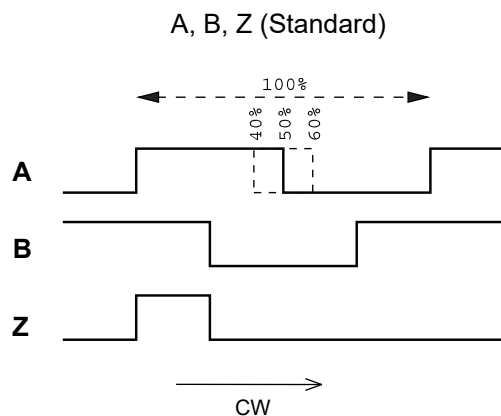
Requirement:
number of pulses 1024 TTL output, VSUP=5 V/TTL, flat ribbon cable 0,15 m

Example for order code:
ETA25K 1024 05BZTTL F0,15

Cable and pin assignments – option 24BZPP, 05BZTTL, 3,3BZTTL and 24BZOC

Flat ribbon cable (option F)			Round signal cable (option R)	
Lead	TTL, OC	push-pull (PP)	Wire colour	PP, TTL, OC
Lead 1 (red)	VSUP	VSUP	red	VSUP
Lead 2	GND	Z	black	GND
Lead 3	A	B	brown	A
Lead 4	B	A	orange	B
Lead 5	Z	GND	yellow	Z
			green	n/c

Signal details



The percentage information describes the proportion of a pulse in dependency to the duration of one period

General

Content

Overview

Redundant Voltage/Current Analogue (ETA25K)

PWM (ETP25K)

Serial (ETS25K)

Incremental (ETI25K)

Multiturn ETA25KPM

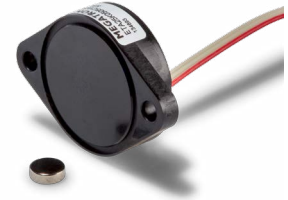
Drawings

Technical data

Accessories

Series ETA25KPM – multi/singleturn, programmable, analogue output, not redundant
Key features ETA25KPM :

- Measuring range 10° to max. 72000° (200 shaft revolutions)
- Programmable by the user using teach-in function. Programmable are the sense of rotation (CW/CCW) and the effective electrical angle [°]
- Programmable up to 10000 times
- Can also be used as a programmable singleturn rotary encoder
- Maximum rotation of the shaft in a voltage-free state without loss of the angle information +/- 179°
- Factory programming (ex works): effective electrical angle of rotation 3600° (10 shaft revolutions), sense rotation CW
- Supply voltage: 9 to 30 VDC, 15 to 30 VDC
- Output signal: 4 to 20 mA, 0 to 5 V, 0 to 10 V


Electrical data ETA25KPM – multi/singleturn, programmable, analogue output, not redundant

Effective electrical angle of rotation 1.)	0 to 10° - 0 to 72000° (max. 200 turns) Start point, endpoint and sense of rotation programmable by the customer. Ex works the angle is set to 3600°. For detecting absolute position >360° the sensor should not be turned more than ±179° without supply voltage.		
Independent linearity (best straight line) 1.)	±0.05% @ 3600°		
Absolute Linearity 1.)	±0.1% @ 3600°		
Output signal	0 to 5 V	0 to 10 V	4 to 20 mA
Resolution 1.)	12 Bit		
Update rate	3 ms		
Supply voltage	9 to 30 V	15 to 30 V	11 to 30 V
Power consumption (no load)	< 10 mA		< 14 mA
Output load	≥ 5 kOhm		≤ 500 Ohm
Insulation voltage 1.)	1000 VAC @ 50 Hz, 1 min		
Insulation resistance 1.)	2 MOhm @ 500 VDC, 1 min		
Max. number of programming cycles	10000		
MTTF (EN29500-2005-1)	224a		229a

1.) According IEC 60393

General

Content

Overview

 Voltage/Current
 Redundant
 Analogue (ETA25K)

 PWM
 (ETP25K)

 SER(SPI/SSI)
 Redundant
 Serial (ETS25K)

 Incremental
 (ETI25K)

 Multiturn
 ETA25KPM

Drawings

 Technical
 data

Accessories

Order Code ETA25KPM – multi/singleturn, analogue output, not redundant			
Description	Selection: standard= black/bold , possible options= <i>grey/italic</i>		
Series	ETA25KPM		
Supply voltage / output signal: VSUP=24 V (15 to 30 V) / OUT=0 to 10 V VSUP=24 V (9 to 30 V) / OUT=4 to 20 mA VSUP=24 V (9 to 30 V) / OUT=0 to 5 V		2410 2442 2405	
Electrical connection, cable length: Flat ribbon cable, standard length 0.15 m <i>Flat ribbon cable with custom length [x.xx m]</i> Round cable, standard length 1 m <i>Round cable with custom length [x.xx m]</i>			F0,15 <i>FX,XX</i> R1,00 <i>RX,XX</i>

Order example ETA25KPM
Requirement:

VSUP=24 V / OUT=0...5 V, sense of rotation CW, rotation angle ex works 3600° (can be programmed by customer), flat ribbon cable 1.00 m

Example for order code:

ETA25KPM 2405 R1.00

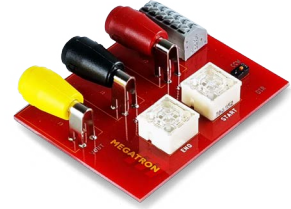
Cable and pin assignment			Connector assignment	
Function	Option F	Option R	Function	Option TS
DIR	Strand 1 (red)	orange	VSUP	23
END	Strand 2	grün	OUT	22
START	Strand 3	gelb	GND	21
VSUP	Strand 4	rot		
OUT	Strand 5	braun		
GND	Strand 6	schwarz		

For details on output programming see page 23.

Programming device PRO for programming the encoder in the field

Key features programmer:

- Programmable measuring range from 10° to max. 72000° (200 shaft revolutions)
- Programmable: sense of rotation (CW/CCW), effective electrical angle [°]
- Up to 10.000 programming cycles per rotary encoder



Order number:

135945

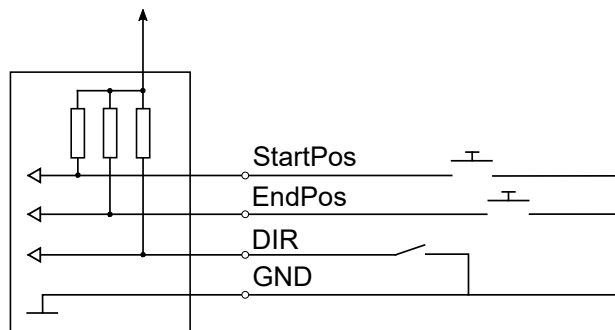
Order code:

Programmer Tool for ETA HTA PM

Programming of ETA25KPM

The programming guide is available for download on the MEGATRON web page <https://www.megatron.de/>

To program the HTA36PM rotary encoder either the following circuit must be built, or the programmer must be ordered from MEGATRON.



Signal output function (only for factory programming). Automatic function for inserting signal plateaus

The function represents the relationship between the zero degree marking on the rotary encoder housing in dependency to the 0° position of the shaft and the resulting output signal in the state of delivery, when turning the shaft clockwise (sense of rotation CW). The effective electrical angle of rotation is 3600° ex works. Before and after the linearly rising output signal for 3600° the ETA25KPM integrates automatically signal plateaus for a rotation angle of each 180°.

The following example shows the output signal pattern when actuating the shaft in the delivery state for 11 revolutions clockwise (sense of rotation CW), starting at the 0° position:

1. 10 rotations of the shaft clockwise 0° to 3600°, linearly increasing output signal 0% to 100% FS
2. 1/2 rotation of the shaft 180° (3600° to 3780°) signal plateau 100% FS
3. 1/2 rotation of the shaft 180° (3780° to 3960°) signal plateau 0% FS

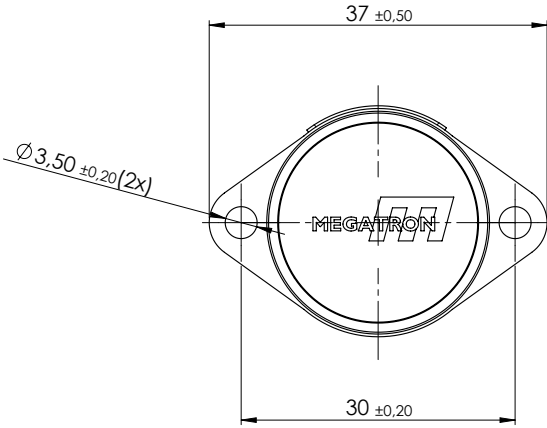


The drawing shows the signal amplitude function for 0 to 10 V signal output

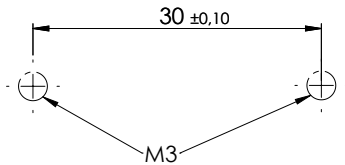
Teach-In function – manual field programming

When manual programming in the field using the teach-in function, the remaining angle for the next full revolution is divided equally into high and low. There are no further signal plateaus. Please see the programming guide on our website for more details.

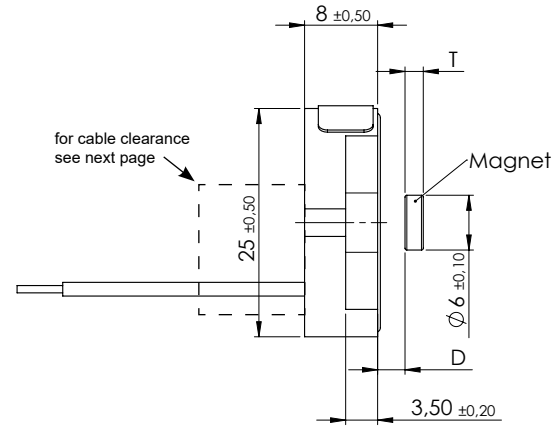
Drawing ETx25K Family



drilling pattern



planarity of installation surface $\square 0,1$
 roughness of installation surface $\sqrt{Ra} 6,3$



Option F - Flat ribbon cable

Option R - Round cable

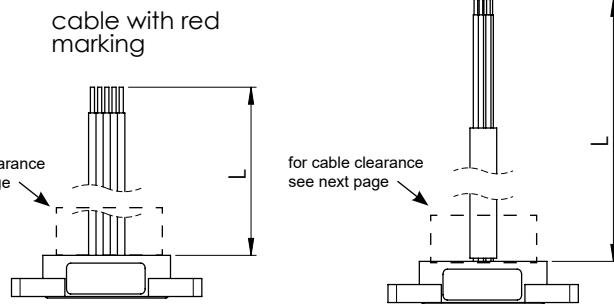


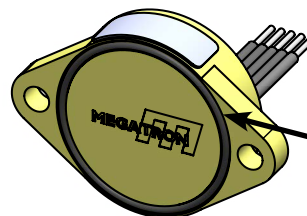
Table for parameter L see next page

Magnet thickness and distance from sensor surface (standard magnet only)

Electronics	Thickness T of the magnet	Mounting distance D
Analogue single turn not redundant, ETA25K, ETP25K, ETS25K (SPI only)	2 mm	1.00 +/- 0.15 mm
Serial single turn ETS25K mit SER (veraltet)	4 mm	0.20 +/- 0.15 mm
Analogue/ Serial redundant, ETA25KX, ETS25KX	2.5 mm	0.50 +/- 0.15 mm
Incremental ETI25K	4 mm	0.20 +/- 0.15 mm
Analogue Multi/singleturn ETA25KPM	4 mm	0.20 +/- 0.15 mm

Angular error in dependency of the deviation of the magnet to the center axis

Deviation from the center axis	Angular error
0.50 mm	0.6°
0.75 mm	1.2°



O-ring, part no. 133324
 DIN 3771-22x1-NBR 70

- for sealing between sensor front and installation surface,
- not included in delivery, please order separately

Important note:

The correct thickness T of the magnet, the mounting distance D and the positioning relative to the central axis of the kit encoder are crucial for its correct function.

Cable specs for option F (flat ribbon cable) and R (round control cable)						
Option	Standard cable length L	Number of single strands (depends on electronics)	Cable sheath Ø or width	Single strands cross section	Allowed tolerance (L)	Minimum bending radius
R	Standard 1000 mm	3	4.3 mm	AWG26	-20 mm to +50 mm	3 x D Ø (D = cable sheath diameter Ø)
		6	5.2 mm			
		8	5.6 mm			
		12	6 mm	AWG28		
F	150 mm	3 to 12	ca. 1.25 per strand	AWG26	-20 mm to +25 mm	-

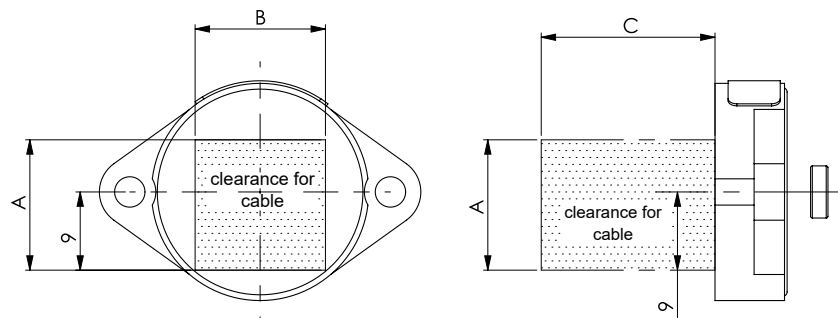
Cables without cable shield

(*) Tolerances according IPC Association

Cable length tolerances – custom lengths	
Length L	Tolerance
≤ 0.3 m	+25 mm / -20 mm
> 0.3 m - 1.5 m	+50 mm / -20 mm
> 1.5 m - 3 m	+100 mm / -40 mm
> 3 m - 7.5 m	+150 mm / -60 mm

Cable harness length measured from sensor surface or soldering pad including connector.
Minimum cable length: 0.08 m (for round cable), 0.05 m for ribbon cable

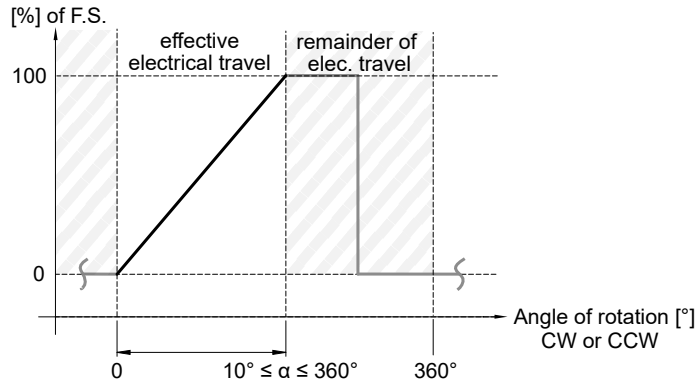
Series	Electronics	Clearance parameters [mm]		
		A	B	C
ETP25K	PWM, single turn	6	8	15
ETA25K	Analogue, single turn	6	8	15
ETA25KPM	Analogue, programmable multturn	6	14	15
ETA25KX	Analogue, redundant single turn	18	8	15
ETI25K	Incremental, single turn, A, B, Z	6	14	15
	Serial, single turn, SER (deprecated)	6	14	15
	Serial, single turn, SPI	9	14	15
ETS25KX	Serial, redundant, single turn (SPI)	18	12	20



Signal definition for custom rotation angles

Custom angles <360°

When programming the electrical angle of rotation of <360°, the remaining non-effective range of rotation is divided equally into high and low.



Mechanical and environmental data - ETx25K Family	
Mechanical angle of rotation 1.)	Endless
Lifetime 2.)	Mechanically unlimited
Max. operational speed	The maximum actuation speed is not limited mechanically. The maximum permissible actuation speed [rev./min] is calculated in relation to the resolution. For absolute encoders:
	$rev./min. (@max. resolution) = \frac{1}{2^{Resolution\ in\ Bit} * Update\ rate\ in\ s}} * 60s$
	For incremental encoders:
	$Max. rev./min. = \frac{Limit\ Frequency\ \frac{1}{s} * 60s}{Number\ of\ Pulses}$
Operating temperature range	-40..+85°C (fixed cable)
Storage temperature range	-40..+105°C
Protection grade front side (IEC 60529)	IP6
Protection grade rear side (IEC 60529)	IP67 (end of cable excluded) - standard with encapsulated electronics IP00 (end of cable excluded) - option without encapsulated electronics
Vibration (IEC 68-2-6, Test Fc)	±1.5 mm / 20 g / 10 bis 2000 Hz / 16 frequency cycles (3x4 h)
Mechanical shock (IEC 68-27, Test Ea)	50 g / 11 ms / halfsine (3x6 shocks)
Housing diameter / length	25 mm (dimensions of the mounting flange, height: 37 mm, width 25 mm)
Housing depth	8 mm
Shaft diameter	No limitation
Mass	Option F (0.15 m flat ribbon cable) approx. 15 g Option R (1.00 m round cable) approx. 40 g
Connection type	<ul style="list-style-type: none"> ▪ Flat ribbon cable (AWG26, 0.15 m with tinned cable endings) ▪ Round cable (AWG26, 1 m with tinned cable endings) ▪ Other connection types on request
Connection position	Axial
Sensor mounting	Flange, by means of two pieces of screws M3
Delivery content	Kit Encoder and Magnet. O-ring/gasket must be ordered separately (Screws for fastening the rotary encoder are not part of the scope of delivery)
Fastening torque (per screw or nut)	≤ 0.5 Nm
Housing material	Glass-fibre reinforced thermoplastic

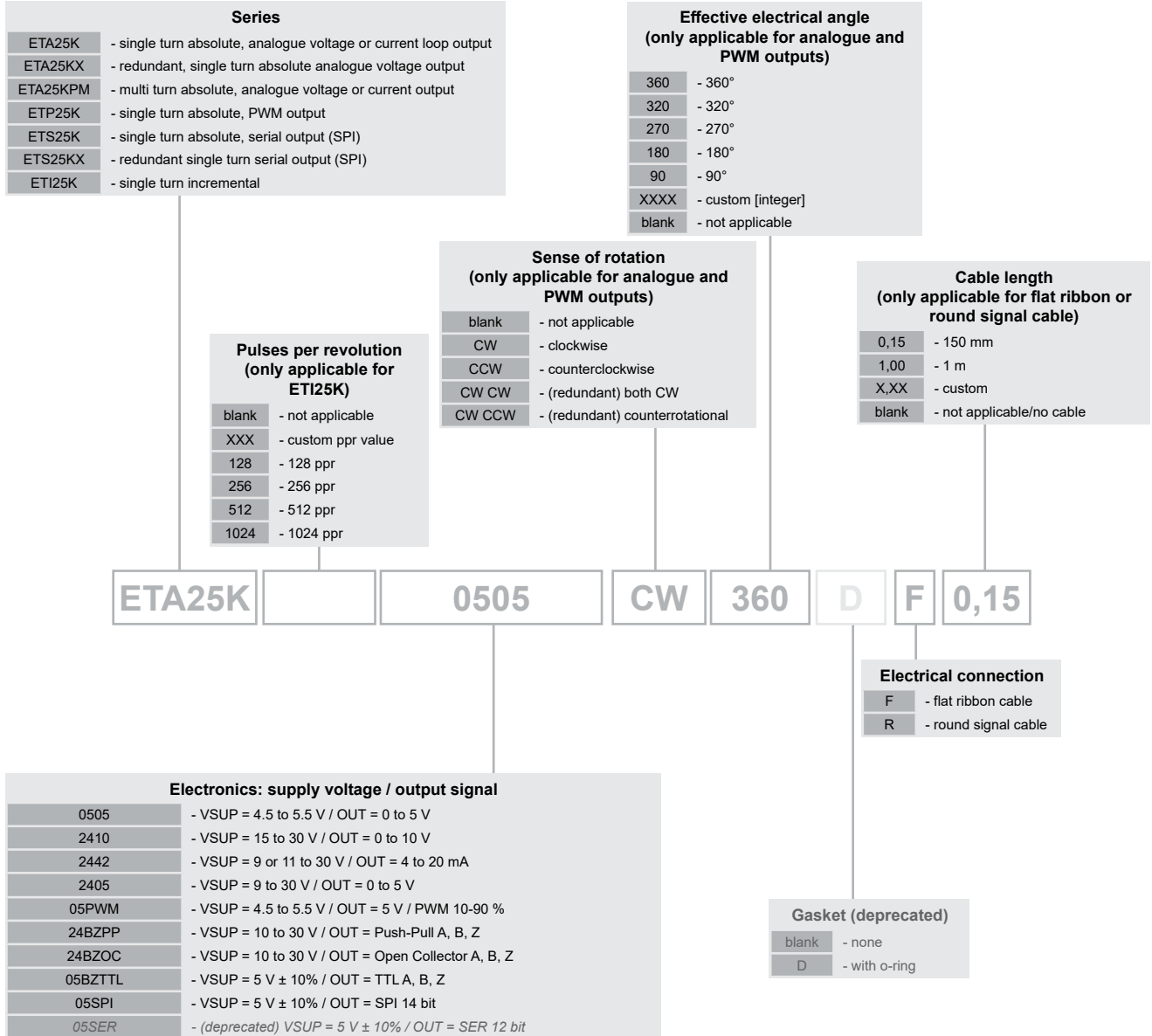
1.) According IEC 60393

2.) Determined by climatic conditions according to IEC 68-1, para. 5.3.1 without load collectives

Immunity / Electrostatic Discharge / REACH / RoHS	
EN 61000-4-3 RF sine wave	Class A
EN 61000-4-6 Conducted sine wave	Class A
EN 61000-4-8 Power frequency magnetic fields	Class A
EN 61000-4-2 ESD	Class B
REACH Regulation (EC) 1907/2006 including the SVHC list	
RoHS Directive 2011/65/EU	

Order Code – Full Overview

>>Please refer to the series sections for details and valid selection criteria



General

Content

Overview

Redundant Voltage/Current Analogue (ETA25K)

PWM (ETP25K)

Redundant SER/SPI/SSI Serial (ETS25K)

Incremental (ETI25K)

Multiturn (ETA25KPM)

Drawings

Technical data

Accessories

Counter ICs for incremental encoders

- LS7083 in DIP or SOIC form factor, generates from incremental-signals quadrature-signals
- LS7166 24-Bit counter IC



LS7083/4N-S



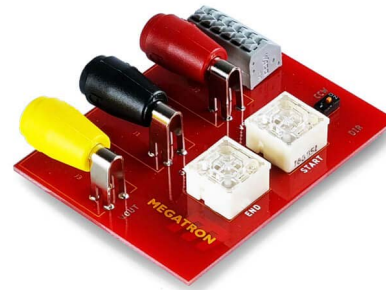
LS7166



LS7083/4N

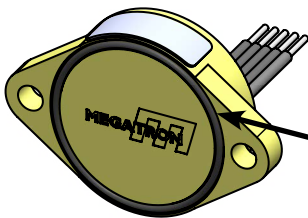
Programmer for multiturn encoder ETA25KPM

- For programming of the sense of rotation (CCW/CW)
- For programming of the effective electrical angle of rotation [°]



Der Winkelsensor wird am Programmer an den 3 Buchsen angeschlossen.

Sealing between mounting surface and encoder



- O-ring, part no. 133324
DIN 3771-22x1-NBR 70
- for sealing between sensor front and installation surface,
 - not included in delivery, please order separately

General
Content
Overview
Redundant Voltage/Current Analogue (ETA25K)
PWM (ETP25K)
Redundant SER/SP/SSI Serial (ETS25K)
Incremental (ETI25K)
Multiturn ETA25KPM
Drawings
Technical data
Accessories